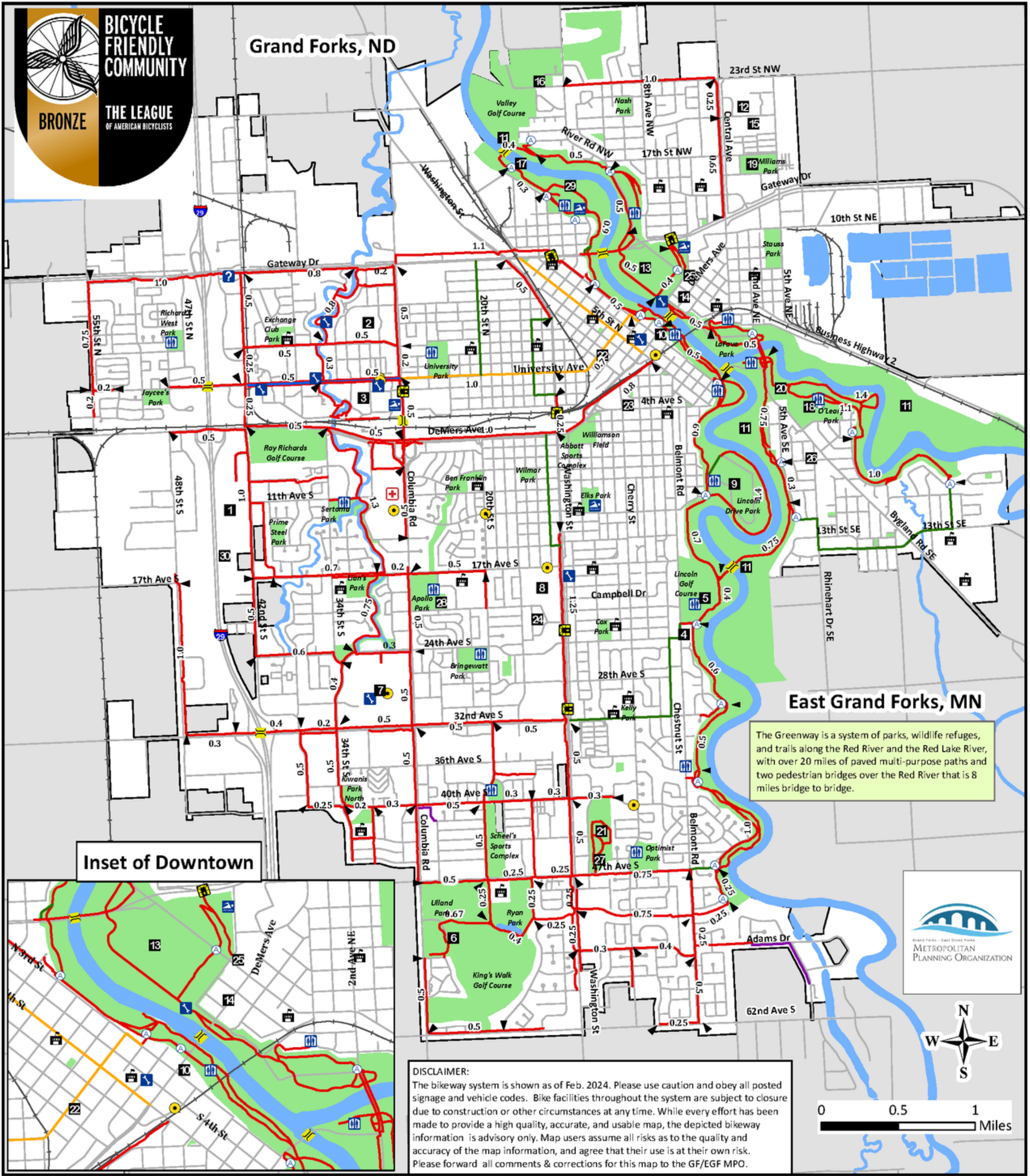


# 2024 Bikeway Map

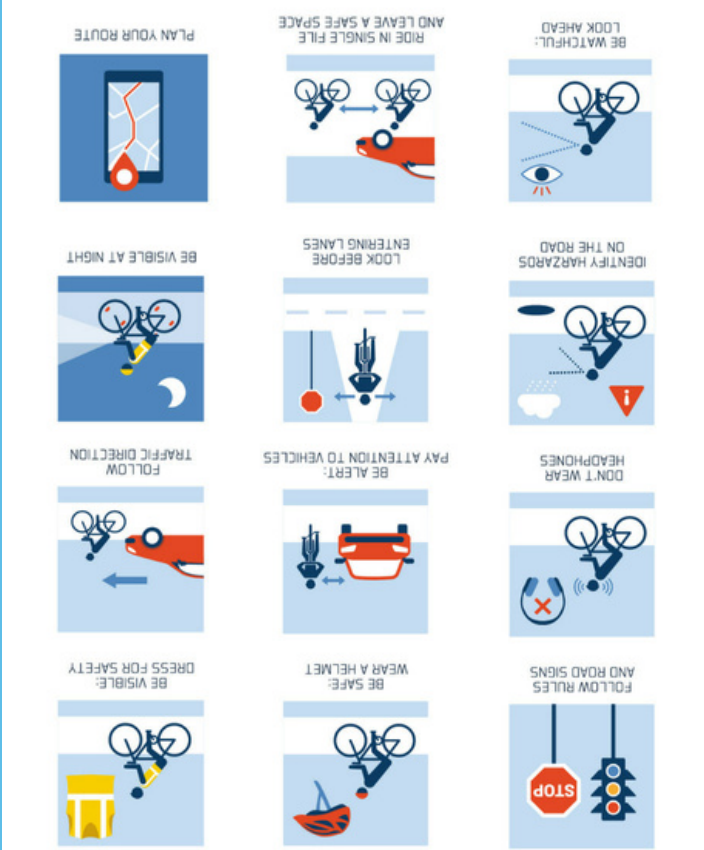
## Grand Forks, ND/East Grand Forks, MN







USE HAND SIGNALS: Let other road users know that you intend to turn or stop.



10 Smart Rules for Bike Safety

## Bicycle & Pedestrian Safety

### Red River State Recreation



515 2nd St NW  
East Grand Forks, MN 56721  
218-773-4950  
mndnr.gov/reservations  
1-866-857-2757

Included in the Greenway, the Red River State Recreation Area and Sherlock Park Campground feature 113 campsites, including 98 electric sites with full hookups (sewer and water). The recreation area also includes trails for walking and biking, areas for picnicking, and rivers for fishing and boating.

### Bike on Bus

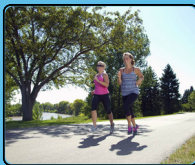


“How To” Display located at:  
Metro Transit Center  
450 Kittson Ave,  
8 AM to 4 PM  
Monday through Saturday  
701-746-2600

All CAT buses are equipped with bicycle racks on the front allowing you to transport your bike on the bus. Visit the display at the Metro Transit Center or contact CAT with any questions on how to use the bus racks.

## The Greenway

The Greenway features several parks, a campground, two golf courses, three disc golf courses, over 20 miles of multi-purpose trails, shore bank fishing sites, and so much more! Come enjoy this unique opportunity for year-round outdoor recreation right in the heart of our two communities!



www.greenwayggf.com

The preparation of this document was funded in part by the United States Department of Transportation with funding administered through the North Dakota Department of Transportation. Minnesota Department of Transportation, the Federal Highway Administration and the Federal Transit Administration. Additional funding was provided through local contributions from the governments of Grand Forks, East Grand Forks, Grand Forks County, and Polk County. The United States Department of Transportation assumes no liability for the contents or use thereof.

Staff from the Public Information Office will respond to calls and concerns Monday-Friday, 8:00am-5:00pm

311

Grand Forks (701) 787-8000  
East Grand Forks (218) 773-1103

Non-Emergency Number

Police

Grand Forks, ND 255 N 4th Street  
Grand Forks, MN 600 Demers Avenue  
(701) 746-2660

### Contact MPO

To ride, download the free Movatic bike share app available in the App Store or Google Play. Once the app is downloaded and a rider profile is created, riders will be able to see available bikes all over Grand Forks in real-time. Riders can then start, end, or pause their ride using the app. Users can ride for free by using a membership on the Movatic app. You can find out more information at [downtownforks.com/grandrides](http://downtownforks.com/grandrides)

### Bike Share

Residents from Grand Forks and East Grand Forks are invited to attend. Meetings are open to the public and held the second Tuesday of every month at 6PM. Check the website for meeting location: [bikingtheforks.com](http://bikingtheforks.com)

These meetings are a venue for public involvement available to local citizens who share an interest in pedestrian and bicycle issues, including the development and use of the Greenway and trails in the Greater Grand Forks community.

Bicycle, Pedestrian & Greenway  
Advisory Committee

## Public Participation

### Rail Safety Tips



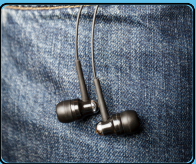
Crossing tracks requires caution

Narrow wheels can get caught between the rails. Walk - don't ride - across.



Use designated railroad crossings

The only legal and safe place to cross railroad tracks is at a designated public crossing.



Turn off music & remove earphones at all rail crossings

Music can be a deadly distraction near the tracks, preventing you from hearing an approaching train.



Wet tracks can be slippery

Walk your bike across the tracks. Step over the tracks - not on them - to avoid slipping.



Watch out for a second train

Wait after the first train passes until you can see clearly in both directions.



If you see a train coming, wait

Flashing lights or a lowering gate means a train is approaching. Do not proceed until the gates go completely up and the lights go off. It is illegal to go around a lowered gate.

### On-Road Facilities



Shared Bike / Bus Lane

A Shared Bicycle/Bus Lane is a traffic lane dedicated for exclusive use by buses, bicyclists, and right-turning vehicles.



Bike Lane

Bicycle Lanes are one-way facilities. They typically carry bicycle traffic in the same direction as adjacent motor vehicle traffic. Bike lanes enable bicyclists to ride at their preferred speed.



Bike Route

Is a roadway or bikeway, designated by the jurisdiction having authority, either with a unique route designation or with Bike Route signs.



Sharrow

Is a roadway that is open to both bicycle and motor vehicle travel. This may be an existing roadway, street with wide curb lanes, or road with paved shoulders.

### Off-Road Facilities



Multi-use Path

A facility separated from motorized vehicular traffic by an open space or barrier and either within the highway right-of-way or within an independent right-of-way.



Unpaved Trail

An Unpaved Trail may be provided as a pedestrian alternative to vehicular routes within the transportation system.



Bike Map PDF

theforKsMPO.org

Scan these QR code with your phone's camera!

## Greater Grand Forks Bike Map

