

- Public Participation

Public engagement and project input for the District Two Bicycle Plan will focus on receiving face-to-face input about regional and local bicycle connections from existing stakeholder groups. Online engagement and email outreach materials have been sent to bicycle transportation-related professionals (i.e. city administrators, bike shop owners, SHIP coordinators) seeking their input. Engagement activities will be scheduled for December/January and will focus on receiving final input for local connections. In addition, a webinar may be available for these professionals to learn about the kind of input requested and how to provide input on the Wikimap. The October engagement schedule includes a presentation on October 12, 2017 at the East Grand Forks Planning and Zoning Commission at 12:00 noon at the East Grand Forks City Council Chambers. You are invited to attend.

- b) Update on Part II: Barriers, Impediments and Obstacles to Pedestrian and Bicycling Activities; and Part III: Existing Conditions Report of the Grand Forks- East Grand Forks Bicycle and Pedestrian Element Update

A number of input comments from stakeholders were received concerning Part I: Proposed Goals and Objectives. MPO staff is grateful to all of those stakeholders providing feedback. MPO staff is currently engaged in assuring these comments –as much as possible- find their way into the finalized version.

MPO staff submitted -for review- by the members of the Advisory Committee a draft version of:

- Part II: Barriers, Impediments and Obstacles to Pedestrian and Bicycling Activities; and
- Part III: Existing Conditions Report.

An Advisory Committee Meeting is currently under preparation for September 22 or 23, 2017 from 9:30 am to 11:00 am at Room A102 Grand Forks City Hall. You are invited to attend and to actively participate in the discussion.

- c) Update of the North Dakota Active Transportation Plan

Kimley Horn, Alta, and KLJ are working on the initial phases to the North Dakota Statewide Active Transportation Plan. One piece of this first phase is understanding what efforts have already been completed by MPOs and other agencies around the state. MPO has provided information on Part II: Barriers, Impediments and Obstacles to Pedestrian and Bicycling Activities; Part III: Existing Conditions Report, and Appendix (containing tables and existing conditions related data).

SUPPORT MATERIALS:

To request your electronic copy of

- Part II: Barriers, Impediments and Obstacles to Pedestrian and Bicycling Activities; and
- Part III: Existing Conditions Report

Please contact our MPO at 701-746-2656 or by email at <Jairo.viafara@theforksmpto.org>

[illegible]

Lincoln Dog Park area

Legend

Address Labels
Road Labels

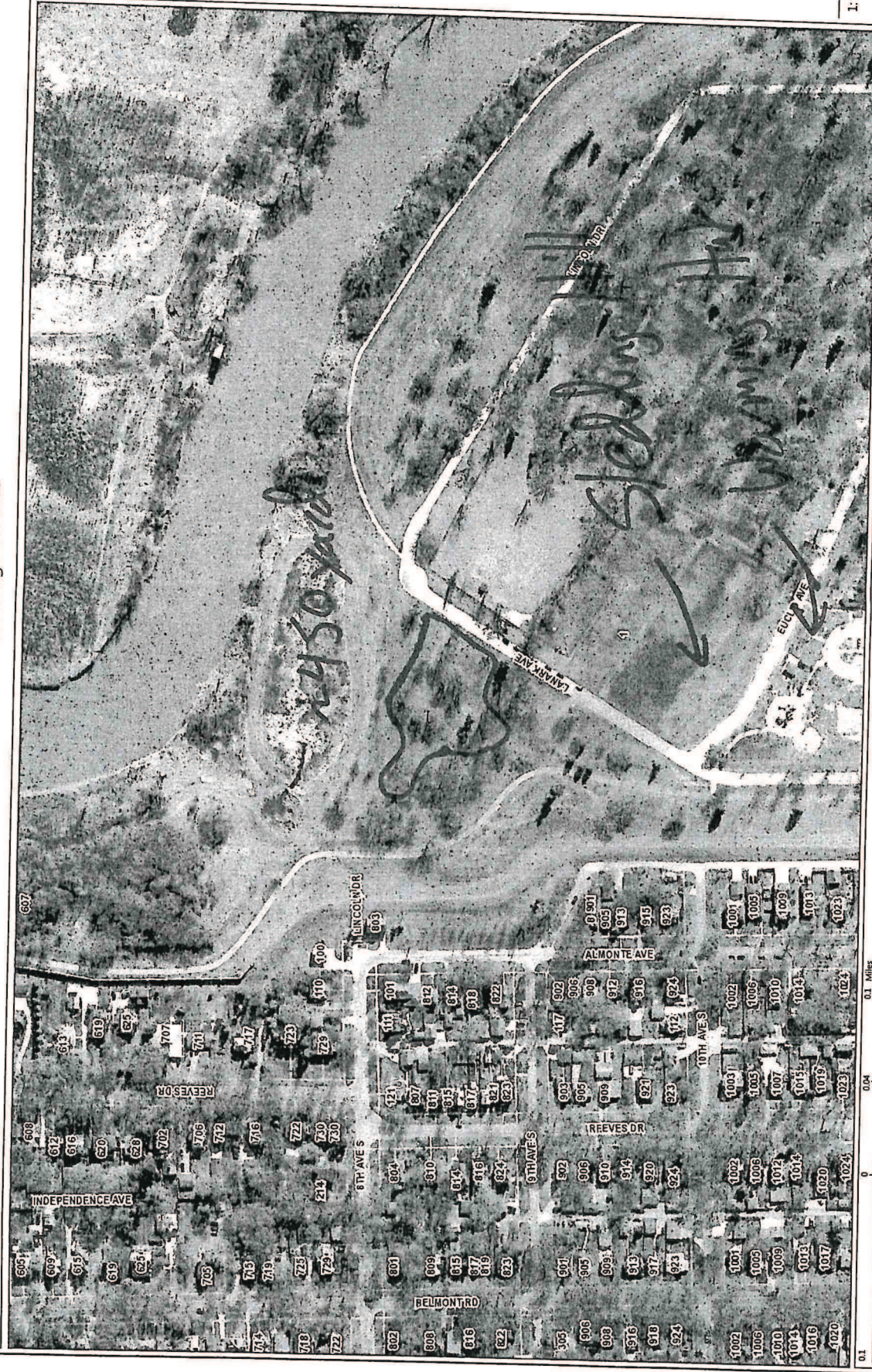
1:2462



Notes

This map was automatically generated using
Geocortex Essentials.

This map is a user generated static output from an Internet mapping site and is for
reference only. Data layers that appear on this map may or may not be accurate,
current, or otherwise reliable.
THIS MAP IS NOT TO BE USED FOR NAVIGATION



0.1 Miles
0.04
0

NAD 1983 StatePlane North Dakota North FIPS 3301 Feet
© Latitude Geographics Group Ltd.

Community Green

Legend

Address Labels
Road Labels

1: 2,462

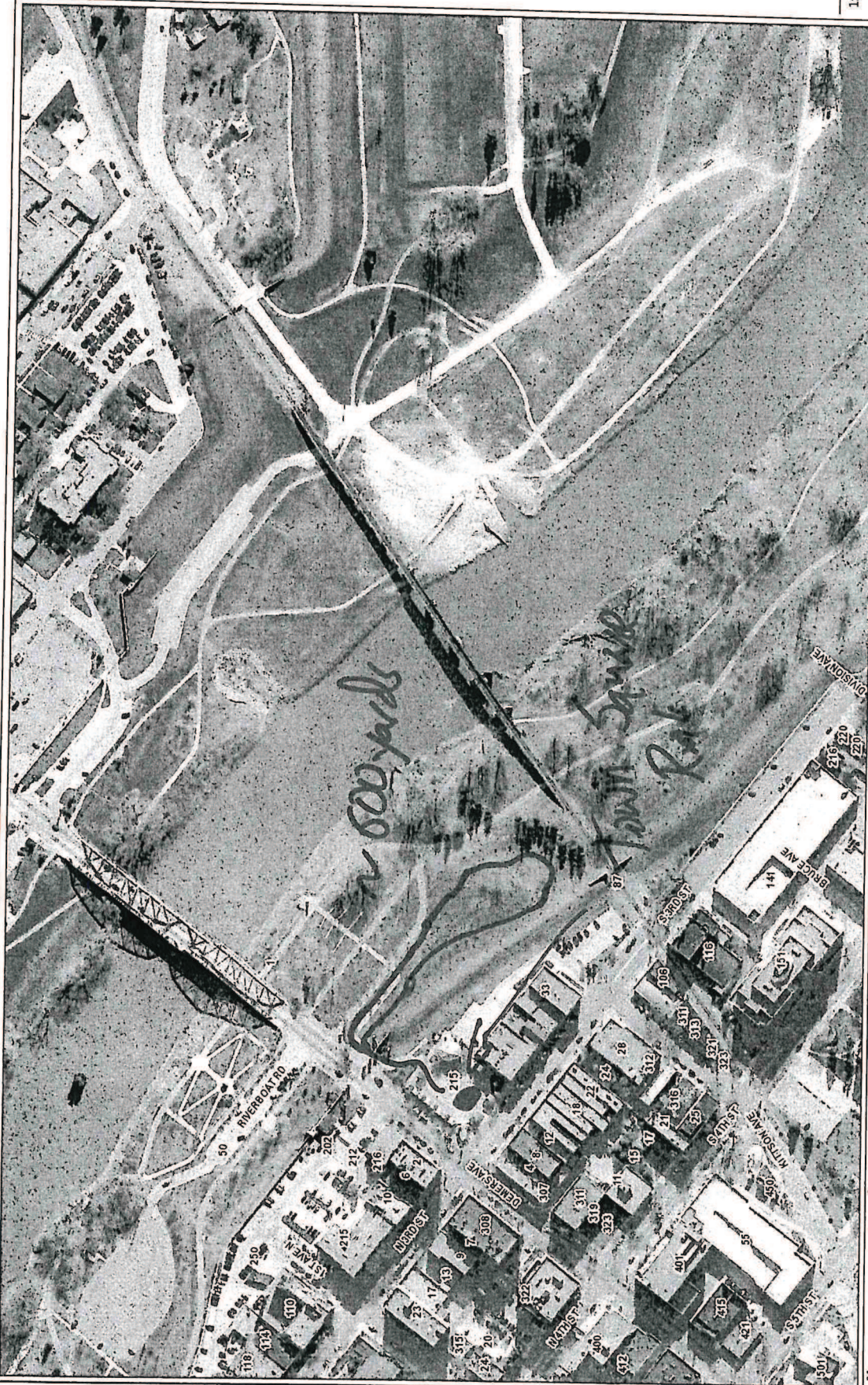


Notes

This map is a user generated static output from an Internet mapping site and is for reference only. Data layers that appear on this map may or may not be accurate, current, or otherwise reliable.

This map was automatically generated using Google Earth.

THIS MAP IS NOT TO BE USED FOR NAVIGATION



0.1 Miles

0.04

0

NAD 1983 StatePlane_North_Dakota_North_FPS_3301_Feet
© Latitude Geographic Group Ltd.